

GEOMELETI



GEOTECHNICAL ENGINEERS & GEOLOGISTS

FIELD AND LABORATORY EQUIPMENT

*...committed to the Art and Science
of Geotechnical Engineering*

*...aiming for maximum quality
through simple and cost-effective solutions*



GEOMELETI is a Consulting Engineering Company, managed and operated by experienced engineers / geologists committed to the art and science of Geotechnical / Infrastructure engineering, always aiming in giving high quality, simple and cost-effective solutions to the projects undertaken.

GEOMELETI, is staffed with experienced Engineers and Engineering Geologists and managed by P. Laskaratos and T. Katsoularis, having extensive experience respectively, among others, in all aspects of Geotechnical / Infrastructure Engineering (Renewable Energy Projects, Railway Projects, Hydraulic works, Road and Bridge design, Buildings / Foundation design, Tunnels, Slope design etc).

The Company has available modern equipment including drilling-rigs, in situ and laboratory testing devices for the Geotechnical Investigations and with the use of specialized software, can give reliable, fast and economical design solutions to all Geotechnical Problems.

SITE INVESTIGATIONS EQUIPMENT

GEOMELETI having available all necessary Drilling equipment for the execution of sampling boreholes and in situ tests, consisting of eight Drilling Rigs, fully equipped with the appropriate samplers, casing of various types and diameters, etc, as well as the appropriate Equipment for In Situ Tests execution (Cone penetrometer testing, plate loading tests, in situ soil density measurements, etc), has the ability of performing a wide range of field Geotechnical and Geophysical Investigations, such as:

- Sampling Boreholes: On-shore / off-shore
- Trial Pits
- Special Sampling
- In situ permeability Testing
- Standard Penetration Tests (S.P.T.)
- Plate Loading Testing
- Wagon Drillings
- Cone Penetrometer Testing
- Pressuremeter Testing
- Trial Embankments
- Borrow Areas Investigations
- Geophysical Investigations

LABORATORY EQUIPMENT

In collaboration with specialized Laboratory, certified by Greek State Laboratory YPEHODE (KEDE – YPEHODE) and accredited by ESYD, our company has the capability of performing the whole range of Laboratory testing in Soil Mechanics, Rock Mechanics, Concrete, Material Quality Control, Water, Soil and Rock Chemical Analyses, such as:

Laboratory Testing in Soil

- Sieve Analysis.
- Natural Moisture, Specific Gravity, Unit Weight.
- Atterberg Tests.
- Proctor and C.B.R Tests.
- Unconfined Compression Strength (UCS).

Laboratory Testing in Rock

- Uniaxial Compression Test.
- Point Load Test
- Brazilian Test.
- Schmidt Hammer Test



- Compressive Strength (oedometer test).
- Permeability (constant and variable head).
- Shear Strength Tests (UU,CD)
- Triaxial Compression Tests (CUPP, UU, CD).

Mineralogical and Chemical Analysis Tests

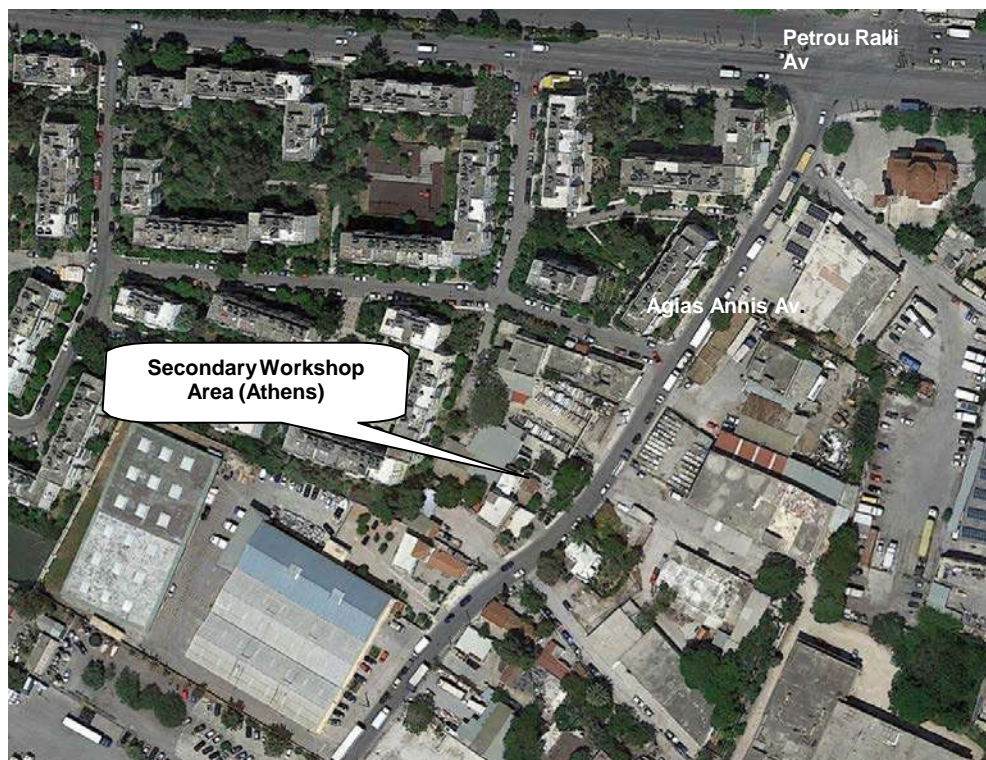
- | | | |
|--|----------------------------------|-----------------------------|
| • PH (water). | • Cl- (water and soil). | • CaCO ₃ (soil). |
| • CO ₂ (water). | • Conductivity (water and soil). | • Organics (soil). |
| • NH ₄ (water). | • Acidity, Alkalinity (water). | • Concrete Testing |
| • Mg ⁺⁺ , Ca ⁺⁺ (water). | • Acidity Degree (soil). | • Concrete Composition. |
| • SO ₄ (water and soil). | | |

In Situ Sampling, Maintenance and Determination of Strength of Concrete Samples.

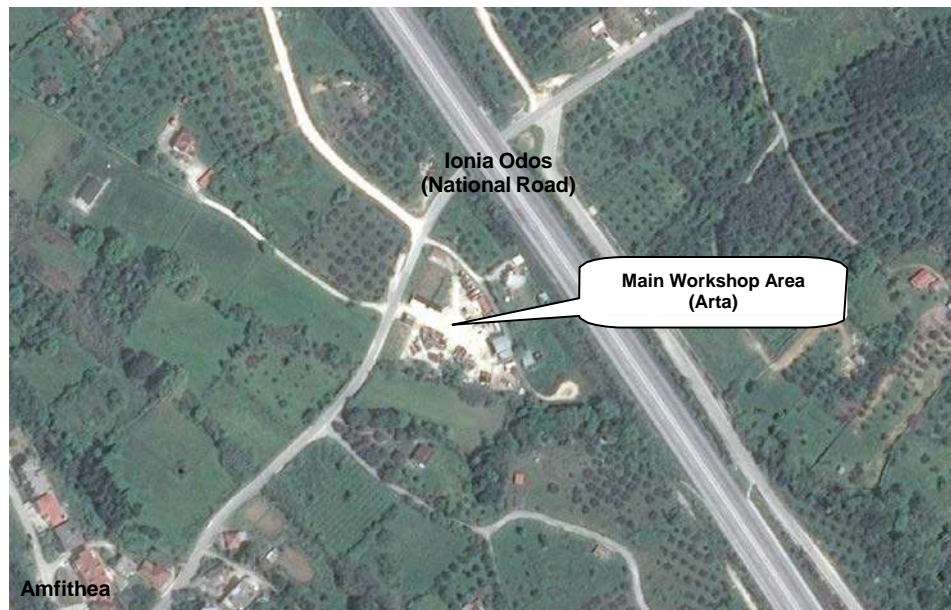
- Schmidt Hammer Tests, Ultrasound Tests, Pull-Starch Tests
- Determination of Aggregate Soundness.
- Los Angeles Test
- Sand Equivalent of Soils and Fine Aggregate

FIELD EQUIPMENT





Secondary Field Equipment Workshop in Attica Region



Main Field Equipment Work-shop in Arta (North-West Greece) Region



GEOTECHNICAL INVESTIGATION & DESIGN - CONSULTING SERVICES

44, Michalacopoulou str., 115 28 Athens, Greece

Tel: +30 210 72 52 085, Fax: +30 210 72 51 219

e-mail: geomeleti@geomeleti.gr, www.geomeleti.gr



Drilling Rigs



GEOTECHNICAL INVESTIGATION & DESIGN - CONSULTING SERVICES

44, Michalacopoulou str., 115 28 Athens, Greece

Tel: +30 210 72 52 085, Fax: +30 210 72 51 219

e-mail: geomeleti@geomeleti.gr, www.geomeleti.gr



Drilling Rigs



CPTU, DPH



Mobile CPTU, DPH Unit



Light Dynamic Cone Penetrometer (DCP) equipment



Pressuremeter Test equipment



Static PLT equipment



Static PLT equipment



Dynamic PLT equipment



Dynamic PLT equipment



Drone DJI Phantom 4 (Advanced)



Resistivity Equipment



Terrameter SAS4000



Electrical Resistivity (ERT) Equipment



Rough Terrain Antenna GPR Equipment



Inclinometer Datalogger and Probe Equipment



LABORATORY EQUIPMENT PHOTOS





Sieve Analysis



Hydrometer



Atterberg Limits



Unconfined Compression



Consolidation Tests



Triaxial Testing



Shear Test



Uniaxial Compression Tests



Point Load Tests



xUltra-Sonic



Schmitt Hammer



Core Sampling



Chemical Testing



GEOTECHNICAL INVESTIGATION & DESIGN - CONSULTING SERVICES

44, Michalacopoulou str., 115 28 Athens, Greece

Tel: +30 210 72 52 085, Fax: +30 210 72 51 219

e-mail: geomeleti@geomeleti.gr, www.geomeleti.gr

